

## Price Matrix

1GbE Layer 3 Lite Managed Switch

BCD-DNS-N1500 Common System Specifications				
<b>Chassis</b>	1U Rackmount			
<b>SFP+ Ports</b>	4			
<b>MAC Addresses</b>	16K			
<b>Static Routes</b>	256 (IPv4) / 128(IPv6)			
<b>Dynamic Routes</b>	256 (IPv4)			
<b>CPU Memory</b>	1GB			
<b>Power Supply</b>	(1) 600W (100-240VAC)			
<b>Warranty</b>	5 Year Global Next Business Day			
Product	Total Ports	Frame Forwarding Rate	Switch Fabric Capacity	MSRP (USD)
<b>BCD-DNS-N1524P</b>	24 PoE+ Ports, up to 30.8W	128Mpps	128Gbps	\$ 2,864.00
<b>BCD-DNS-N1548P</b>	48 PoE+ Ports, up to 30.8W	164Mpps	176Gbps	\$ 4,623.00



**FOR MORE INFORMATION:** [bcdvideo.com](http://bcdvideo.com) | [sales@bcdvideo.com](mailto:sales@bcdvideo.com) | +1.847.205.1922 **TECH SUPPORT:** [support@bcdvideo.com](mailto:support@bcdvideo.com) | +1.844.462.2384

Copyright © 2018, BCDVideo. All rights reserved. This document is provided for information purposes only. The contents are subject to change without notice.

## Price Matrix

Layer 3 Standard Network Switch

BCD-DNS-N2000 Common System Specifications				
<b>Chassis</b>	1U Rackmount			
<b>SFP+ Ports</b>	2			
<b>MAC Addresses</b>	32K			
<b>Static Routes</b>	256 (IPv4) / 128(IPv6)			
<b>Dynamic Routes</b>	256 (IPv4)			
<b>CPU Memory</b>	1GB (2GB For BCD-DNS-N2128PX)			
<b>Power Supply</b>	(1) 1000W (100-240VAC)			
<b>Warranty</b>	5 Year Global Next Business Day			
Product	Total Ports	Frame Forwarding Rate	Switch Fabric Capacity	MSRP (USD)
<b>BCD-DNS-N2024P</b>	24 PoE+ Ports, up to 30.8W	128Mpps	172Gbps	\$ 3,086.00
<b>BCD-DNS-N2048P</b>	48 PoE+ Ports, up to 30.8W	164Mpps	220Gbps	\$ 3,880.00
<b>BCD-DNS-N2128PX</b>	24 PoE+ Ports, up to 30.8W	256Mpps	192Gbps	\$ 4,397.00



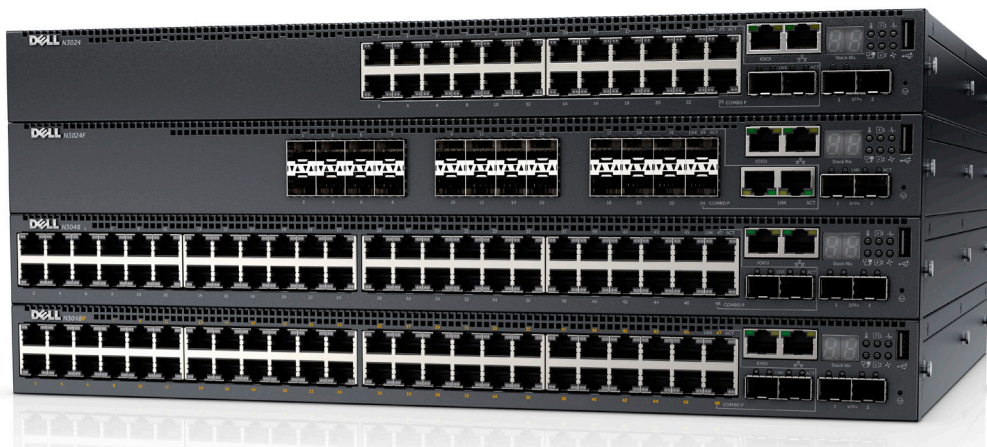
**FOR MORE INFORMATION:** [bcdvideo.com](http://bcdvideo.com) | [sales@bcdvideo.com](mailto:sales@bcdvideo.com) | +1.847.205.1922    **TECH SUPPORT:** [support@bcdvideo.com](mailto:support@bcdvideo.com) | +1.844.462.2384

Copyright © 2018, BCDVideo. All rights reserved. This document is provided for information purposes only. The contents are subject to change without notice.

## Price Matrix

1GbE Layer 3 Network Switch

BCD-DNS-N3000 Common System Specifications				
<b>Chassis</b>	1U Rackmount			
<b>SFP+ Ports</b>	2			
<b>MAC Addresses</b>	32K			
<b>Static Routes</b>	1,024 (IPv4) / 1,024 (IPv6)			
<b>Dynamic Routes</b>	8,160 (IPv4) / 4,096 (IPv6)			
<b>CPU Memory</b>	1GB			
<b>Power Supply</b>	(1) 200W [ (1) 715W on BCD-DNS-N3024P ]			
<b>Warranty</b>	5 Year Global Next Business Day			
Product	Total Ports	Frame Forwarding Rate	Switch Fabric Capacity	MSRP (USD)
<b>BCD-DNS-N3024F</b>	24 1000-SX Ports 2 SFP+, 2 GbE Combo	158Mpps	212Gbps	\$ 3,667.00
<b>BCD-DNS-N3024P</b>	12 PoE+ up to 30.8W, 12 PoE Ports up to 60W	158Mpps	212Gbps	\$ 3,917.00
<b>BCD-DNS-N3048P</b>	48 RJ45 Auto-sensing Ports 2 SFP+ Ports, 2 GbE Combo	193Mpps	260Gbps	\$ 4,763.00
<b>BCD-DNS-N3131PX-ON</b>	24 1GbE RJ45, 8 2.5/5GbE, 2 SFP+ Ports, 2 GbE Combo	428Mpps	328Gbps	\$ 5,851.00



**FOR MORE INFORMATION:** [bcdvideo.com](http://bcdvideo.com) | [sales@bcdvideo.com](mailto:sales@bcdvideo.com) | +1.847.205.1922 **TECH SUPPORT:** [support@bcdvideo.com](mailto:support@bcdvideo.com) | +1.844.462.2384

Copyright © 2018, BCDVideo. All rights reserved. This document is provided for information purposes only. The contents are subject to change without notice.

## Price Matrix

10GbE Layer 3 Network Switch

BCD-DNS-N4000 Common System Specifications				
<b>Chassis</b>	1U Rackmount			
<b>QSFP+ Ports</b>	(2) 40GbE QSFP+ Fixed Ports			
<b>MAC Addresses</b>	131,072			
<b>Static Routes</b>	1,024 (IPv4) / 1,024 (IPv6)			
<b>Dynamic Routes</b>	8,160 (IPv4) / 4,096 (IPv6)			
<b>CPU Memory</b>	2GB			
<b>Power Supply</b>	(2) 460W			
<b>Warranty</b>	5 Year Global Next Business Day			
Product	Total Ports	Frame Forwarding Rate	Switch Fabric Capacity	MSRP (USD)
<b>BCD-DNS-N4032F</b>	24 10GbE SFP+ Ports	476Mpps	640Gbps	\$ 10,376.00
<b>BCD-DNS-N4064F</b>	48 10GbE SFP+ Ports 2 40GbE QSFP+	952Mpps	1.28Tbps	\$ 14,144.00



**FOR MORE INFORMATION:** [bcdvideo.com](http://bcdvideo.com) | [sales@bcdvideo.com](mailto:sales@bcdvideo.com) | +1.847.205.1922 **TECH SUPPORT:** [support@bcdvideo.com](mailto:support@bcdvideo.com) | +1.844.462.2384

Copyright © 2018, BCDVideo. All rights reserved. This document is provided for information purposes only. The contents are subject to change without notice.